

falling in love with
Mudgee

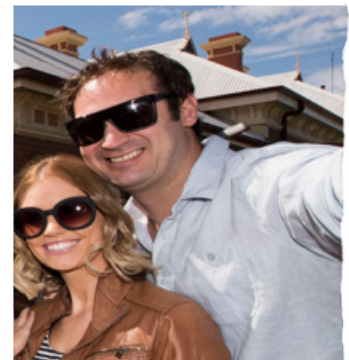
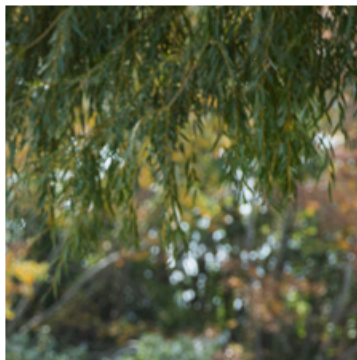


MUDGEE
REGION

reset your senses

2022 NSW TOP TOURISM TOWN AWARDS // MUDGEE

MUDGEE IS LOVED AS A CONTEMPORARY COUNTRY DESTINATION, INFUSED WITH ART AND MUSIC, SERVING QUALITY PRODUCE AND WINE, AND SHAPED BY A STRONG SENSE OF COMMUNITY. VISITORS ARE INVITED TO CONNECT RIGHT ACROSS THE REGION, INCLUDING THE NEIGHBOURING TOWNSHIPS OF GULGONG, RYLSTONE AND KANDOS. THE COMMUNITY COLLABORATE TO SUPPORT THE SUSTAINABLE GROWTH OF TOURISM IN KEEPING WITH A VIBRANT YET INTIMATE SETTING. VISITORS ARE ENCOURAGED TO SLOW DOWN AND RESET THEIR SENSES. LOCATED LESS THAN 270KM NORTHWEST OF SYDNEY, THE FUSS-FREE JOURNEY IS ALL PART OF THE EXPERIENCE, AND WHAT AWAITS IS A STUNNING MIX OF CHARM AND SOPHISTICATION.



MUDGEE // FAST FACTS

LOCATION

Mudgee is 268km
northwest of Sydney

POPULATION

25,000+

ELEVATION

454m

AVERAGE TEMPS

Spring:	min 8°	max 23°
Summer:	min 15°	max 30°
Autumn:	min 9°	max 23°
Winter:	min 2°	max 15°

TOWNS + VILLAGES

Mudgee, Rylstone, Kandos, Gulgong

AVERAGE RAINFALL

670mm

TRAFFIC LIGHTS

Nope!

MAJOR INDUSTRIES

Tourism, viticulture, agriculture and mining



ITINERARY AUDIENCE // THE LOVED-UP COUPLE



*For this loved-up couple,
it is not just about romance.*

Their Helix psychographic archetype is that of **'The Lover'**. This means they want a close relationship, to achieve intimacy, feel special and make others feel special too. They are passionate and unashamed in fostering relationships and expressing appreciation. There is also a sensual aspect to their lives. Anything that pleases the senses — beautiful things, enticing smells, indulgent foods — give joy and delight to this couple.

Aspirational Millennial couple (26-40 years old) from Sydney

Ambitious, up-and-coming, culturally diverse young couples committed to creating a successful future. Now often choosing to travel domestically with more immersive moments in mind, including small-scale or boutique events, workshops and masterclasses as part of their overall experience of a destination. Quality local product, food and drink is important to them as well as boutique or short-term rental accommodation options, especially those located in more unique locations, such as natural settings. This market is highly engaged online and in social media. They follow social media influencers for recommendations and are often motivated by special offers and deals they can share with friends.

Their primary travel motivation is a relaxing and romantic getaway.

GETTING THERE

DRIVE

Sydney: 3.5 hours along the Great Western Highway via the Blue Mountains, or follow the Bells Line of Road via Lithgow

Newcastle: take the Bylong Valley Way or Golden Highway for a 4 hour drive via Denman

Wollongong: around 4 hours along the Great Western and Castlereagh Highways

Canberra: 5 hours via Yass, Cowra and Wellington

FLY

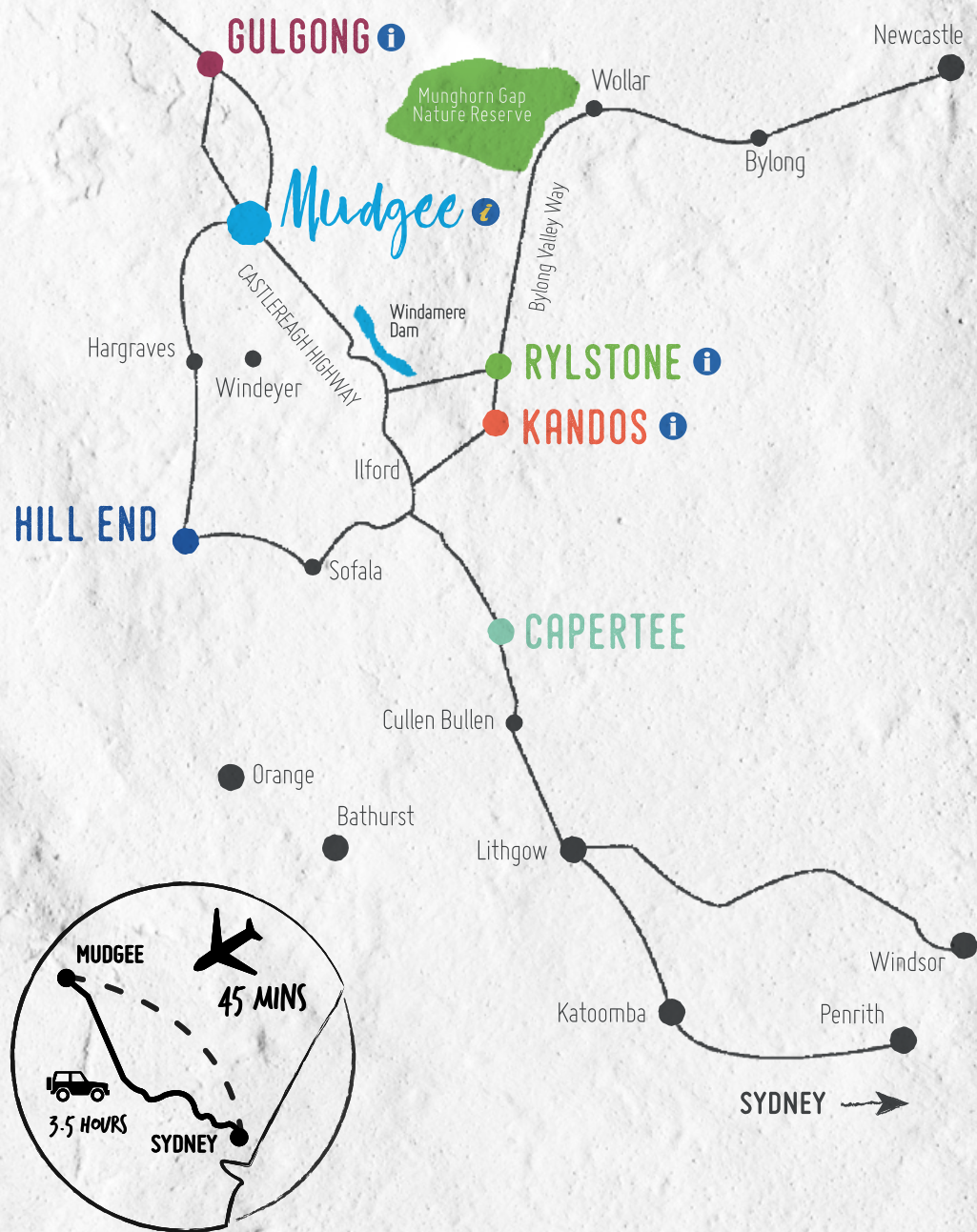
Sydney to Mudgee:
45 minutes with FlyPelican

Newcastle to Mudgee (via Sydney):
1.5 hours with FlyPelican

TRAIN + COACH

Trainlink coach services connect with the Sydney Rail Network at Lithgow





FOUR DAYS OF FALLING IN LOVE, WITH MUDGEES.

From the fertile farmland surrounds of the Mudgee Region comes great local produce available from a swag of epicurean outlets. It is from this rich source that chefs and winemakers draw inspiration and know how to make your taste buds sing.

This regional NSW town is loved as a contemporary country destination, infused with art and music, serving quality produce and wine, and shaped by a strong sense of community, supporting the sustainable growth of tourism in keeping with a vibrant yet intimate setting. It's worth the extra night or return visit to explore every corner of this place.

You can *feel* the love in the Mudgee Region, and you'll be all the better for it.



As I snuggle with my lover, sipping a glass of Mudgee wine and nibbling on a ridiculously good-looking local platter, I realise my inner soul is resetting. We're on wine time now, and it doesn't get better than that.

DAY ONE // ARRIVE IN STYLE + GET CRAFTY

MORNING

Jump in your car from Sydney for a 3.5-hour road trip northwest, over the Blue Mountains and past Lithgow.

Welcome to the romance of the Mudgee Region. Breathe in fresh country air and take in the wide-open spaces. It's time to reset your senses.

Life is in the detour, 45 minutes before arriving in Mudgee, take a moment to explore one of the town's neighbouring charming country villages — [Rylstone](#). Boasting extraordinary heritage streetscapes, unexpected food and wine delights, and a contemporary boutique shopping scene, you'll be eager to tell your friends about your gem of a find.



MUDGEES WIDE-OPEN SPACES



29 NINE 99 YUM CHA & TEAHOUSE, RYLSTONE

Drop into local favourite [29 Nine 99](#) for a bite to eat where owner and chef Na Lan has been serving authentic Chinese yum cha and tea since 2008. Here you'll find more than 30 types of dumplings, steamed buns and desserts. Located in the original Bridge View Inn with sandstone features and a charming outdoor courtyard, the dumpling house was named after the date Na Lan married her husband, a local Rylstone artist, on 29.09.1999. Still hand-making the delicious dumplings today, Na Lan loves sharing her little slice of Australian paradise with all who pass through.



FOLKOLOGIE, RYLSTONE

As you stroll the heritage high street, browse [Folkologie](#)'s collection of Australian handcrafted furniture, gifts and homewares and the [Convent & Chapel Wool Shop](#) who house a spectacular range of local and international yarns (getting crafty is très chic, and knitting is on point — pardon the pun).

When you arrive in the town of Mudgee, you'll find five star luxury in a self-contained cottage at boutique property [Evanslea](#), just minutes from the centre of Mudgee but seemingly far from everything. You'll arrive in style as you enter the beautiful grounds, nestled alongside the Cudgegong River. Take time to explore and settle in, welcome to your temporary country home.



EVANSLEA — LUXURY BOUTIQUE ACCOMMODATION, MUDGEE

AFTERNOON

Take a stroll down Market Street to the new [Mudgee Arts Precinct](#) for a self-guided tour of the latest gallery exhibitions.

The architecturally designed building pays homage to the past and is also home to the multi-award-winning [Mudgee Visitor Information Centre](#) where the tourism crew are super helpful and passionate about where they live, they can give you a rundown on a few local hot spots and a copy of the FREE [Mudgee Region Magazine](#) and [pocket map](#) (to take home and share with friends or help plan your next visit) and purchase local produce, wine and wares from their country chic retail space.



HEAVENLY HAMPER,
MUDGEE VISITOR INFORMATION
CENTRE OR ORDER ONLINE
VISITMUDGEEREGION.COM.AU

If you forget anything, no stress — Mudgee Region Tourism offers a local produce [online hamper store](#) — you can get Mudgee deliciousness delivered to your door year-round!

And just a short stroll away, try your creative hand at a [Mudgee Art House](#) workshop, like their popular pottery wheel classes (check their workshop schedule ahead of time to work in with your travel dates).



MUDGEE ARTS PRECINCT & VISITOR INFORMATION CENTRE



VISITOR INFORMATION CENTRE, MUDGEE



EXPERIENCE EXPERTS AT VISITOR INFO CENTRE



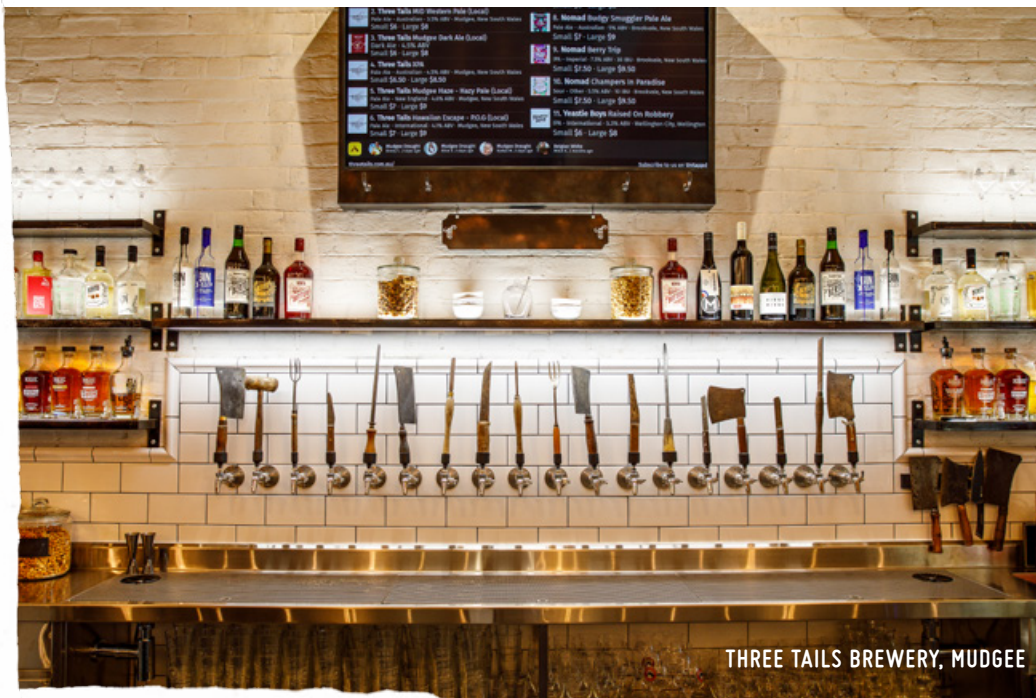
MUDGEE ART HOUSE WORKSHOP, MUDGEE

EVENING

Time to let your taste buds do the talking at [Three Tails Brewery](#) – you'll find 18 taps of fresh craft beers and a huge selection of local wines sourced from independent producers. Dine on-site with [Smokin Bro & Co.](#) for a drool-worthy low and slow BBQ experience cooked with fire, smoke and passion.



THREE TAILS BREWERY, MUDGEE



THREE TAILS BREWERY, MUDGEE



SMOKIN' BRO & CO., MUDGEE

DAY TWO // WINE-DOWN + INDULGE-UP

MORNING

Wake-up next to your love and get ready to immerse yourself in Mudgee's iconic local produce and wine scene.

Take the short drive into town and fill your basket with local produce, to prepare a self-cooked breakfast back at your accommodation.

Visit the [Itty Bitty Bread Shop](#) to grab some local Mudgee Sourdough and right next door you'll find more than your average corner store, at [Mudgee Corner Store](#), where they're all about keeping it real, delicious and fuss-free. There you'll find a sustainable selection of incredible local produce including fetta from award-winning [High Valley Cheese Co.](#), [Steins Farm Produce](#), Farmer Brown Pastured Eggs, The Little Big Dairy Company milk and Fish River Roasters barista coffee.



FILL YOUR BASKET WITH LOCAL MUDGEE PRODUCE



MUDGEE CORNER STORE, MUDGEE

Or if making it yourself doesn't float your boat, get the crew at Mudgee Corner Store to whip up one of their locally famous bacon & egg rolls — yum!



THE MUDGEE CORNER STORE TEAM

Back at your accommodation, and after brekkie, [Country Kombi](#) will collect you at 10am for a private full day 'Foothills Wine Tour'.

Situated on the western slopes of the Great Dividing Range, Mudgee Region has some of the highest vineyards in Australia, ranging from 450–1180m above sea level. Frosts and cold nights delay budburst; rainfall and humidity are low, sunshine hours are great, and irrigation is essential on some of the most favoured sites.

Many tree changers now call the region home, taking a slice of their city life and gently connecting it with the authenticity of the country. What this means is visitors have an abundance of sophisticated yet grounded experiences to indulge in.

The tour winds through Mudgee's famous foothills in 'Sabrina' — Mudgee's famous split-screen Kombi. Born in 1958 to proud VW parents, Sabrina had been on a long journey before she found the love she was looking for in current owners Stu and Kersti — restoring her to her previous glory and finding her a new home in Mudgee.

The tour takes you to an amazing line-up of boutique cellar doors; [Logan Wines](#), [First Ridge](#), [Skimstone](#), [Moothi Estate](#) (includes lunch), [Burrundulla Vineyards](#) and [Gooree Cellar & Pantry](#).



COUNTRY KOMBI, MUDGEE



LOGAN WINES



FIRST RIDGE



MOOTHI ESTATE



GOOREE CELLAR & PANTRY



AFTERNOON

You'll return to your accommodation around 4:30pm.

Relax in the comfort of your cottage, sip on a glass of local wine and simply take time to reconnect.

You're on wine time now.

EVENING

For an insta-worthy degustation dining experience head to [Pipeclay Pumphouse](#) by chef Andy Crestani, located on the grounds of [Robert Stein Winery](#). Andy's menus are created to pay homage to the surrounds and the produce it provides. Andy uses simple techniques that accentuate the freshness of the produce; including matched wines.



PIPECLAY PUMPHOUSE AT ROBERT STEIN WINERY, MUDGEE

DAY THREE // NATURE + CULTURAL IMMERSION

MORNING

Today is all about discovery. You'll meet passionate locals on your travels who will add to your story, keen to share tips on how to enrich your experience in their beloved town.

Join [Mudgee Horse Riding Centre](#) for a relaxing two-hour morning horse ride in the beautiful Mudgee heartland where you are likely to spot native wildlife; kangaroos, wombats and goannas. Rides are supervised and accompanied by your trail guide leader, ideal for couples looking to immerse themselves in a stunning Australian landscape.

After farewelling your new horse buddies, head into Mudgee to wander heritage streets and visit charming cafes in your own time.



MUDGEE HORSE RIDING CENTRE, MUDGEE

AFTERNOON

For lunch, you'll find [Alby + Esthers](#) tucked down a cobblestone alleyway under a vine that changes with the seasons. The circa 1873 stone terrace Alby + Esthers calls home is packed with character and charm, friendly staff and a mouth-watering menu inspired by local produce. Choose a spot in the shaded courtyard for alfresco ambience or in the eclectic welcoming interiors of their art gallery with share tables. Sip coffee, kombucha, or local wines from an extensive list whilst dining on progressive fare.

You'll find a fabulous [boutique shopping trail](#) in Mudgee, with shops stocking a curated collection of designer clothing, wardrobe essentials, accessories, art items and supplies, homewares and lifestyle pieces.

Time to relax back at your accommodation, soaking in all you've discovered so far about Mudgee.



ALBY + ESTHERS, MUDGEE

EVENING

Immerse yourself in the beauty of Australian native foods, botanicals, culture and rituals at [Warakirri by Indigiearth](#) with a 5-course degustation dining experience.

Over four magical hours, enjoy Australian native food and beverages, prepared in a unique fusion of modern techniques and traditional methods.

Be transformed by authentic cultural entertainment, musical and cultural storytelling, and in-depth knowledge of Aboriginal culture and food, pioneered by owner and Ngemba Weilwan woman, Sharon Winsor. Warakirri means to 'grow with us'.

This is bush tucker dining at its finest and showcases the beauty of 60,000 years of culture. Warakirri is 100% Aboriginal owned and operated, it champions the development and employment of Indigenous people.

After your indulgent bushtucker dining experience you may not want the night to end, and if that's the case head over to NSW's oldest wine bar [Roth's Wine Bar & Cellar](#) for a night cap, live music and guaranteed chill local vibes.



WARAKIRRI DINING EXPERIENCE BY INDIGIEARTH, MUDGEE



ROTH'S WINE BAR & CELLAR, MUDGEE

DAY FOUR // LASTING LOVE



THE LITTLE COOKING SCHOOL, MUDGEE

MORNING

Pack your bags and bid farewell to your hosts — you know you've made lifelong friends at Evanslea.

No need for breakfast as you'll take in a private cooking class with Tamara at [The Little Cooking School](#) — an informal, relaxed, creative space located on the outskirts of town. Offering casual cooking classes suited to all skill levels, this is a fabulous opportunity to roll up your sleeves and explore a passion for food — ending your class with an early lunch, indulging in what you've made from the best of the region's local produce, paired with a glass of local wine.

AFTERNOON

Time to head home to Sydney, but not before you take a short detour to the gorgeous heritage village of Gulgong, just a 20-minute drive from Mudgee.



AUSTRALIAN MADE HONEY AT MUDGEE HONEY HAVEN, MUDGEE

Arrive in Gulgong and fall in love with this historic goldmining town, circa 1870, it's sure to enchant and enrich your Mudgee experience. Known for its fascinating museums and heritage streetscapes, you'll instantly feel as though you've stepped back in time. Stroll through the original and narrow bent streets with high footpaths; be amazed by the traditional craftsmanship of the gorgeous heritage buildings.

Discover the heritage of the area at interactive spaces like the [Gulgong Holtermann Museum](#). The volunteers who graciously give up their time to host this museum are all too eager to share their passion and knowledge.

Classically country and a little quirky, [Prince of Wales Hotel Gulgong](#) is the place to drop in for a cold beverage, live music and a local yarn. This place exudes old world charm and character.

On the way, you'll find [Mudgee Honey Haven](#) — worth stopping in to explore one of the things Mudgee is most famous for. They stock the widest selection of honeys that you're welcome to taste before you decide on your favourites to take home. Watch bees hard at work through a special glass window, offering a glimpse of all the action that takes place in a working beehive. Think honey mead, honey ice cream and even honey infused beauty and personal care goods.



HERITAGE STREETSCAPE, GULGONG



GULGONG HOLTERMANN MUSEUM, GULGONG

EVENING

When you arrive home, unpack your Mudgee Region goodies (pencil in a dinner party to share with friends) and take a moment to reflect on your incredible Aussie backyard road trip. Give your squeeze a squeeze and know that the Mudgee locals, your newfound friends, can't wait to welcome you again soon.



MUDGEE
REGION



We'll
see you
again soon,
love
Mudgee
x